



# Science Festival Relaxed Sessions at Museum on the Mound

April 8<sup>th</sup>, 2024

Morning Session: 11am-1pm

Afternoon Session: 2-4pm

**We are so looking forward to welcoming you to the Museum on the Mound!**

If you have any questions before your visit, please contact our Education Officer Hannah Nicolson at [hannah.himmelman-christoper@lloydsbanking.com](mailto:hannah.himmelman-christoper@lloydsbanking.com). She is always happy to help.

## How to find us:



### By train

We are only a few minutes walk from Edinburgh's Waverley station. Take the Waverley Bridge exit, turn left and make your way up Market Street and North Bank Street.

### By bus

The nearest Lothian bus stops are codes MD and MB. Please check the Lothian Bus website ([www.lothianbuses.com](http://www.lothianbuses.com)) for the latest information. Most of the Tour Buses and the Airlink (100) services stop at the top of Market Street. Edinburgh's main bus station at St Andrew Square is 5-10 minutes walk away.

### By car

Follow routes for Edinburgh City Centre and City Centre Attractions (if using a satellite navigation or GPS system, use postcode EH1 2LP). There is very limited parking available, but this must be booked in advance by contacting Hannah Nicolson at [hannah.himmelman-christoper@lloydsbanking.com](mailto:hannah.himmelman-christoper@lloydsbanking.com). There is limited Pay and Display parking in Market Street, St Giles Street and Chambers Street. There are also large public car parks nearby at Waverley Station (New Street) and Castle Terrace.



- This is where you will arrive.
- The gates will be open from 11-11.15am for the morning session and 1-1.15pm for the afternoon session.
- You are welcome to arrive after this time, but please call us at 0131 243 5464 and we will unlock the gates for you.
- The Museum will be closed to the public and you will only be able to visit if you have booked a free ticket.



**Hannah**



**Kathryn**



**Elysia**



**Phoebe**

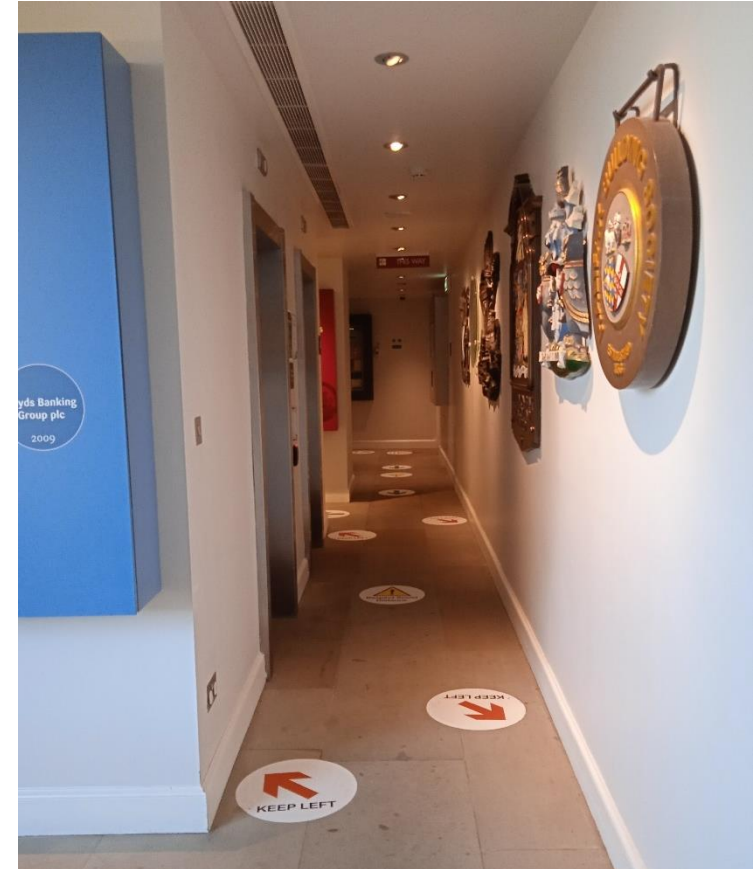


**Daisy**

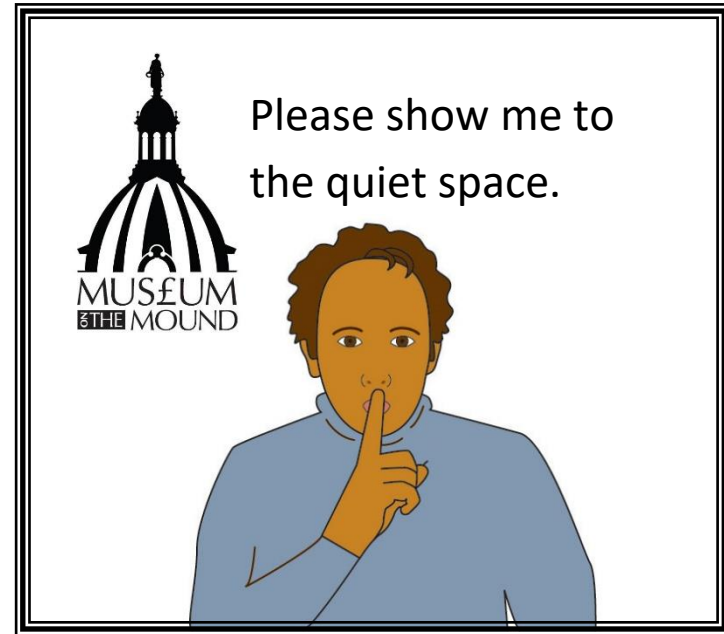


**Mariia**

- **This is the Museum Education team. They will be helping you on your visit.**
- **They are here to help and love answering questions!**
- **When you arrive, one of the team will show you where to go.**



- The museum is on one floor of the building.
- There are lifts, but they are not for visitors to use. They take staff to private areas of the building.



- We have ear defenders you can borrow and communication cards you can use.
- Please let us know if there's anything we can do to make the activities more accessible and enjoyable for you.



- There will be handling tables and activities set up around the Museum.
- There will be many things to see, touch and do.
- You can look at and touch different coins, handle the metal we use to make our coins today and learn how our coins are made.



- You will have the option of making your own replica medieval coin.
- There is a loud noise when the coin is hammered.
- If this makes you uncomfortable, you can let the Museum team know.





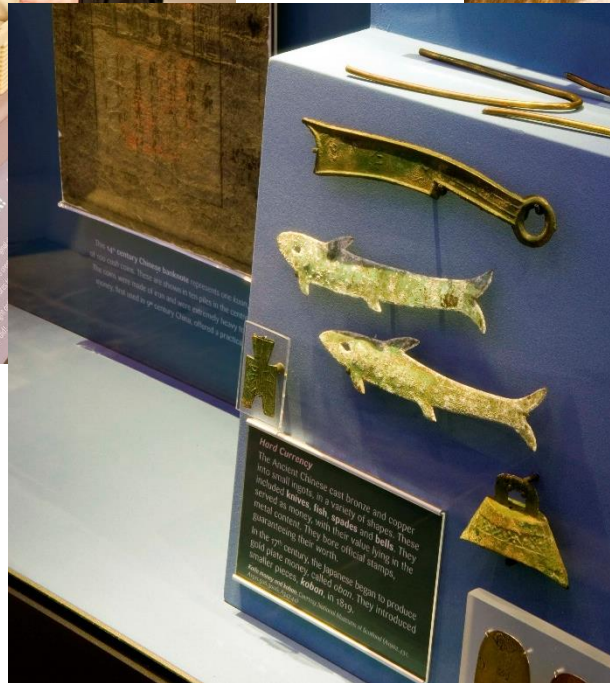
- You can use UV lights and microscopes to discover the incredible security features on our banknotes.
- You can test the strength of polymer vs. paper.



- There is a quiet area in the Museum that you can use.
- There will be things to play with and paper to draw on.



- There are trails and activities available.



- You are welcome to look around the Museum.
- Unfortunately, there is nowhere in the building to buy drinks or snacks.



- You will be shown where to find the toilets.
- There are steps to some toilets, but there is also a fully accessible toilet.
- We use paper towels rather than driers.



- When you walk through the museum, you will see a mannequin. The mannequin is wearing a long black cloak that someone wore in an old TV advertisement.



- You will exit through a gift shop.
- If you want to buy something, a team member will be able to help you.



- You will exit through the same door you used to enter the Museum.
- This will take you back out to the garden. From there, you can easily visit the Royal Mile or Princes Street Gardens.





- We hope you enjoy your time in the Museum and would love to hear about your experience and any suggestions you may have.
- You can get in touch by calling 0131 243 5464, by emailing [info@museumonthemound.com](mailto:info@museumonthemound.com) or through social media.



@museumonmound



Museumonthemound



MuseumontheMound